



Sape ultra usoare, termo si fono izolante

©2009

*“De 15 ani
împreună”*

Mortare uscate Adesivul Milenarului III
ADEPLAST® **IZOTHERM**
sistem certificat



ADEPLAST S.A.

- 1994, înființată la Oradea, cu denumirea Multistar Prod srl;
- 1996 domnul Marcel Bărbuț devine acționar, și societatea se transformă în societate mixtă romano-austriacă;
- obiectiv fabricarea mortarelor adezive pentru placaje ceramice, gleturi, șape, pardoseli industriale și mortare mecanizate;
- comercializarea sistemelor de schele, cofraje, mașini de tencuit, vată minerală, polistiren.
- marca sub care se reunesc toate aceste produse poartă numele de **ADEPLAST** și este marcă înregistrată, proprietate a S.C. ADEPLAST S.A.
- 2004, iunie, se dau în folosință noile capacități de producție cu tehnologii de ultimă oră.
- 2005-2006-2007, se crează un puternic parc auto care deservește compania atât pentru aprovizionarea cu materii prime cât și pentru a livra produsele finite rapid, în orice colț al țării.
- 2007, Multistar Prod srl devine societatea pe acțiuni ADEPLAST S.A.
- 2008, iulie, fabrica de vopsele și tencuieli decorative produce primele șarje de materiale pentru finisaje de o calitate excepțională
- 2008, septembrie, fabrica din Ploiești începe să producă primele șarje de mortare uscate cu o productivitate de 180 tone pe ora.
- 2011, septembrie, fabrica de polistiren expandat din Ploiești, cu o capacitate de producție de 700.000 m³ / an își începe activitatea

©2009

*“De 15 ani
împreună”*

Mortare uscate Adesivul Mileniului III
ADEPLAST **IZOTHERM**
sistem certificat

ADEPLAST S.A.
– Fabrica de mortare uscate Oradea



©2009

*“De 15 ani
împreună”*

Mortare uscate *Mărcii Mărcii III*
ADEPLAST® **IZOTHERM**
system certificat



ADEPLAST S.A. **– Fabrica de mortare uscate Ploiești**

Proiectul ambițios și construcția au fost demarate în ultimul trimestru al anului 2007.

Primele șarje de mortare uscate au ieșit pe poarta fabricii în septembrie 2008.



©2009

*“De 15 ani
împreună”*

Mortare uscate Adesivul Milenarului III
ADEPLAST® IZOTHERM
sistem certificat

ADEPLAST S.A.

– Fabrica de vopsele și tencuieli decorative din Oradea

Proiect de investiții care a urmat cursul firesc, obiectivul urmând să completeze zestrea de produse din gama finisajelor de calitate superioară.

Fabrica de vopsele poate să producă până la 80.000 tone pe an.



©2009

*“De 15 ani
împreună”*

Mortare uscate Măceșul Mărieșului III
ADEPLAST® **IZOTHERM**
sistem certificat



ADEPLAST S.A.

– Fabrica de polistiren expandat, platforma industrială Corlătești, jud. Prahova

Pentru a completa gama de produse componente ale termosistemului ADEPLAST IZOTHERM s-a demarat investiția unei capacități noi de producție a plăcilor din polistiren expandat.

Fabrica de polistiren expandat produce plăci izolatoare din polistiren expandat ignifugat, de diverse sortimente și grosimi.



©2009

*“De 15 ani
împreună”*

Mortare uscate Mărcă înregistrată
ADEPLAST® IZOTHERM
sistem certificat



Mortare uscate Adezivul Mileniului III
ADEPLAST® IZOTHERM

Procedul de realizare a izolației termice a clădirilor

Adeziv pentru polistiren



Placă de polistiren



Dibluri



Masă de armare



Plasă din fibră de sticlă



Sistemul de acoperiri decorative

Amorse, Grunduri
 Vopsele acrilice, **Color system**
 Vopsele siliconice **ADEPLAST®**
 Tencuieli decorative acrilice,
 Tencuieli siliconice



©2009

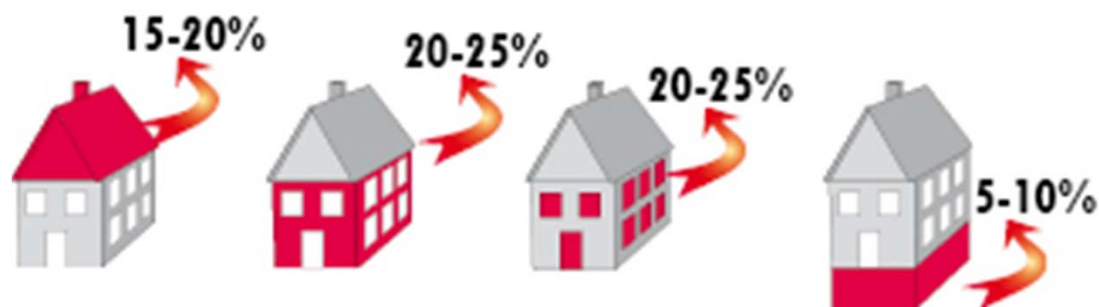
“De 15 ani
 împreună”

Mortare uscate Adezivul Mileniului III
ADEPLAST® IZOTHERM
system
sistem certificat



Factorii responsabili de pierderi termice

1. Pereții exteriori
2. Mansarda, podul sau terasa
3. Fundația clădirilor
4. Ferestrele, ușile
5. Planșeul peste subsol



Pentru a economisi energia este necesară o izolare corectă a clădirii, prin îmbunătățirea termoizolării pereților exteriori, ferestrelor, acoperișului, subsolului.

©2009

*“De 15 ani
împreună”*

Mortare uscate Adzivul Milenului III
ADEPLAST® **IZOTHERM**
sistem certificat

POLITERM BLU

Agregate
superușoare
pentru prepararea
mortarelor
termoizolatoare

Thermo system
ADEPLAST®

pungă de 170 L

pungă de 420 L



PRODUS REVOLUȚIONAR!

“De 15 ani
împreună”

Mortare uscate Adesivul de înaltă rezistență III
ADEPLAST® **IZOTHERM**
sistem certificat



Vă mulțumim pentru atenție.

CONTACT

S.C. ADEPLAST S.A.

410605 Oradea, Uzinelor 3,
România, jud. Bihor
tel.: 0040 259 40 37 50
0040 259 40 37 65
fax.: 0040 259 40 37 61
mobil: 0040 740 18 81 44
e-mail: office@adeplast.ro
<http://www.adeplast.ro>

©2009

*“De 15 ani
împreună”*

Mortare uscate Adesivul Milenialul III
ADEPLAST® **IZOTHERM**
sistem certificat

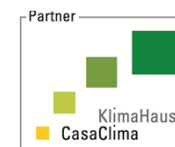


presents

**Innovative Materials
for
Thermal Insulation**

***Welcome
Benvenuti***

Lightweight thermal insulating mortar
Presentation created by Edilteco Group



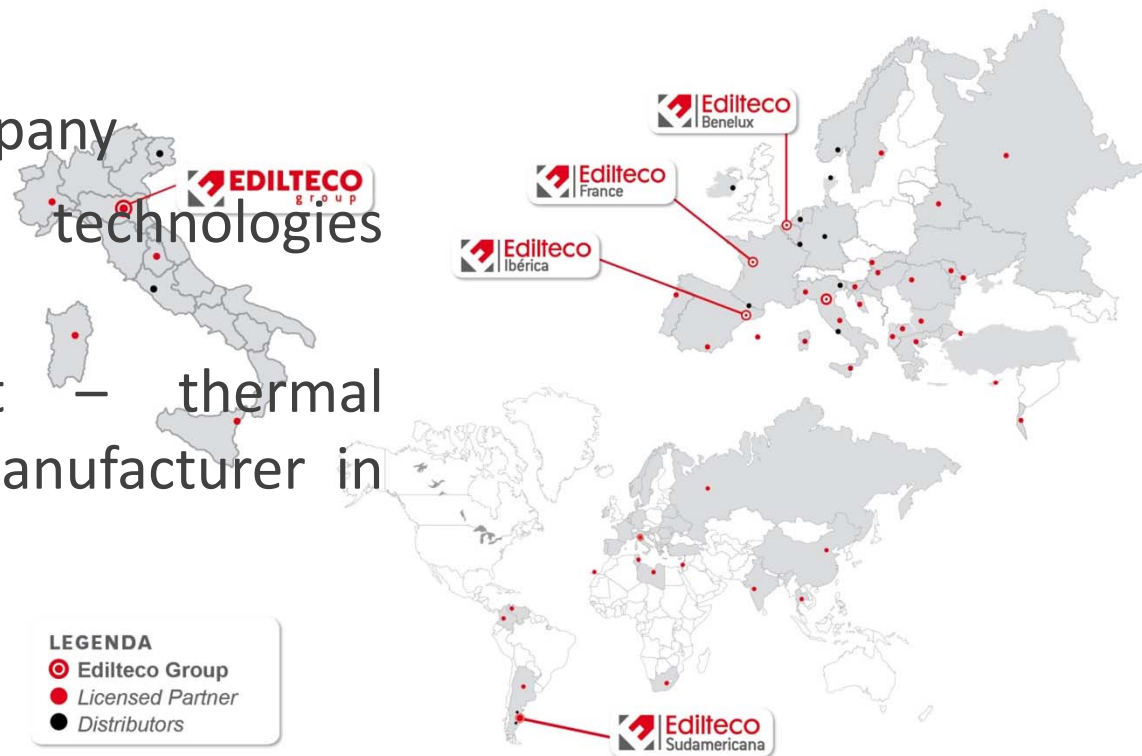
TOPICS

- Edilteco Group
- Energy saving: a worldwide concern
- Thermal insulation: basic knowledge
- Politerm: a successful transfer of theory to practical
- Politerm applications
- Politerm preparation
- Premix products
- Conclusions

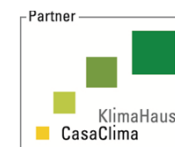


EDILTECO GROUP

- Italian Certified Company
- Thermal insulation technologies since 1981
- Largest lightweight – thermal insulating mortar manufacturer in Europe
- Worldwide sales:
 - 33 PARTNERS
 - 52 COUNTRIES



Lightweight thermal insulating mortar
Presentation created by Edilteco Group



ENERGY SAVING: A WORLD WIDE CONCERN

- Beyond geographical border, economical trend and political situation, regardless the climate zone

- Main sectors involved:

- Home and industrial consumption
- Electric appliances
- Transportation



- Kyoto protocol (*"... is an agreement under which industrialized countries will reduce their collective emissions of greenhouse gases by 5.2% compared to the year 1990 ..."*)

- Governamental regulation

- Citizen consciousness



THERMAL INSULATION: BASIC KNOWLEDGE

- What does it mean ?
 - “Is the property of a material to delay the heat transfer between two environments having different temperatures”
- Measure units:
 - Thermal conductivity = λ (W/mK) - [the lower the better]
 - Thermal resistance = Thickness / λ - [the higher the better]

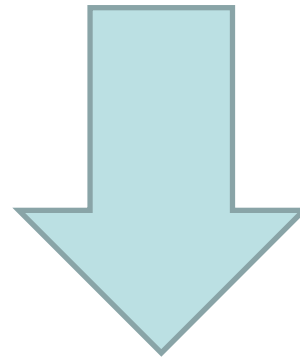
MATERIALS INSULATING PROPERTY: λ value

- **Air** = **0.025**
- Wood = 0.04 - 0.4
- Alcohols & oils = 0.1 - 0.21
- Rubber = 0.16
- Cement, Portland = 0.29
- Water (liquid) = 0.6
- Thermal grease = 0.7 - 3
- Glass = 1.1
- Soil = 1.5

- Concrete, stone = 1.7
- Ice = 2
- Sandstone = 2.4
- Stainless steel = 12.11 ~ 45.0
- Lead = 35.3
- Aluminium = 237
- Gold = 318
- Copper = 401
- Silver = 429
- Diamond = 900 - 2320

THERMAL INSULATION: BASIC KNOWLEDGE

- Thermal insulation: any material has thermal insulating properties
- Air (still): the best thermal insulating material



“the best thermal insulation material is the one which contains, within the same volume, the largest amount of STILL AIR”

EPS: Expanded PolyStyrene

RAW POLYSTYRENE +
PENTHANE GAS



WATER VAPOUR

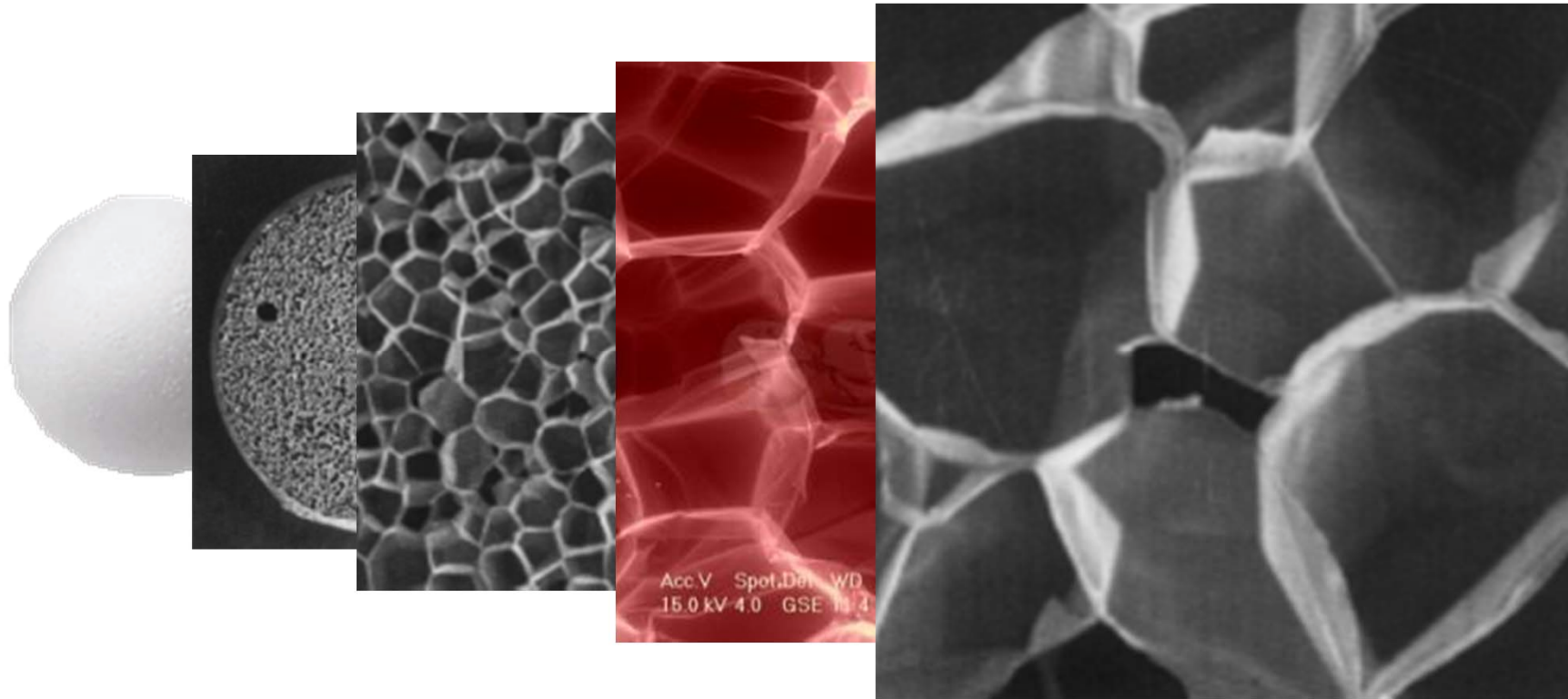


EXPANDED EPS
CLOSED CELL
(= STILL AIR)

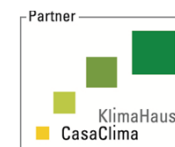


EPS: Expanded PolyStyrene

Made for 98% of air in closed cells



Lightweight thermal insulating mortar
Presentation created by Edilteco Group



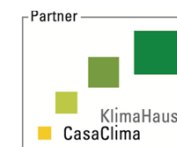
EPS: Expanded PolyStyrene

- ✓ Water vapour
- ✓ Pentane gas

- ⊘ NO CFC



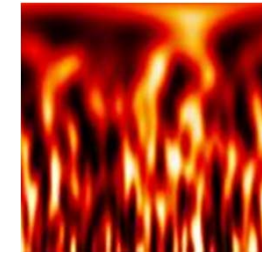
Lightweight thermal insulating mortar
Presentation created by Edilteco Group



EPS: Expanded PolyStyrene

- ✓ The EPS is devoid of nutritional value which could support the growth of fungi, bacteria and other microorganisms.
- ✓ The EPS is non-toxic and inert.
- ✓ The EPS even in landfill does not pollute soil or the atmosphere.
- ✓ Resistance to humidity : EPS is permeable to water vapour and water proofing (no absorption of water).

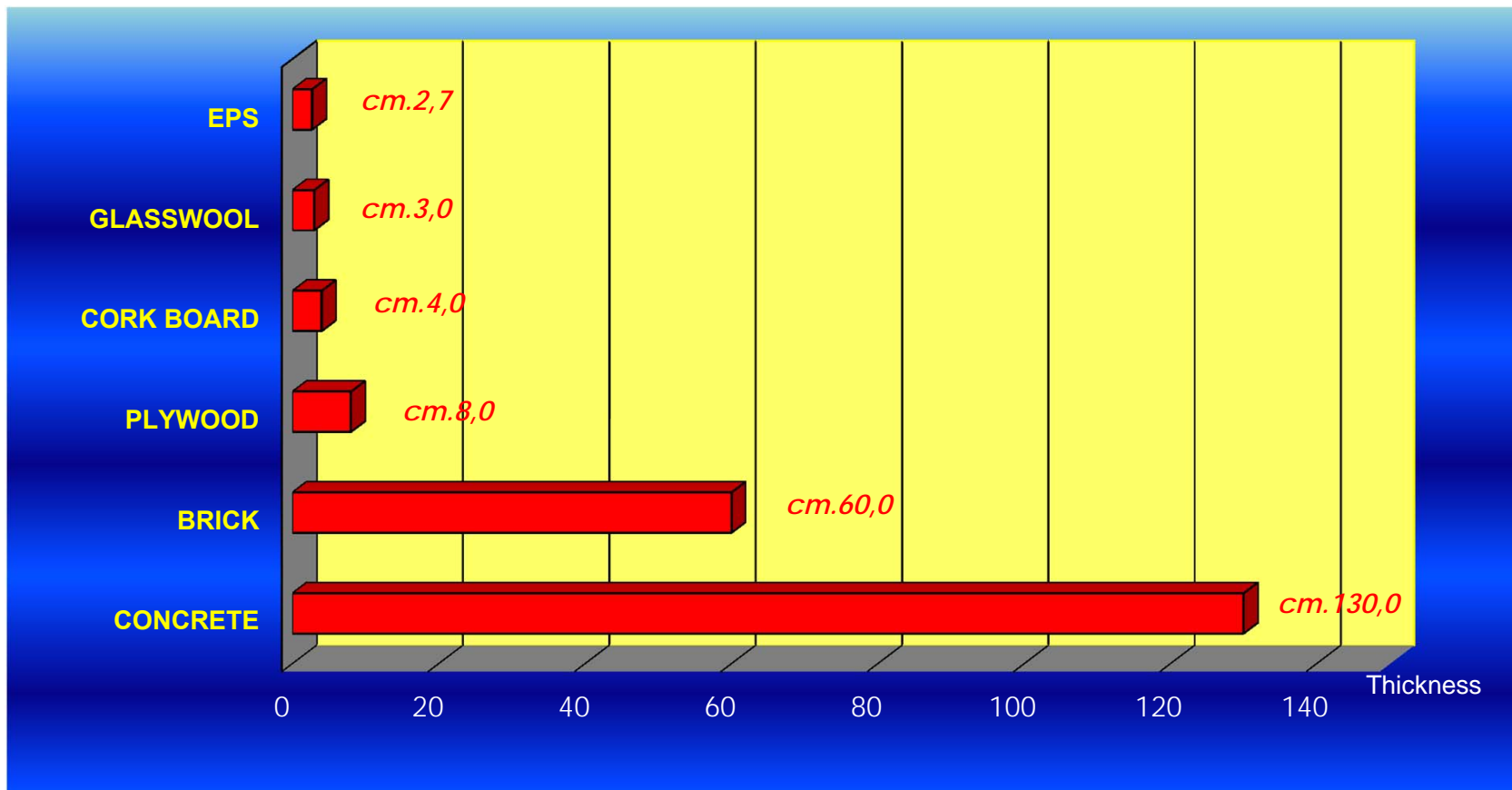
EPS: Expanded PolyStyrene



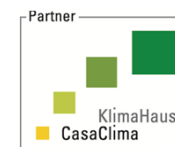
In fire....

- ✓ EPS within mortars : EPS beads melt and the empty cavity create a barrier to the heat transfer

Materials insulating properties: comparison



Lightweight thermal insulating mortar
Presentation created by Edilteco Group

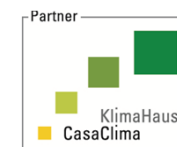


Politerm: a successful transfer of theory to practical

- ✓ Superlight inert made of EPS vergin beads preadditivated with **EIA** (**E**dilteco **I**nsulating **A**dditive)
- ✓ Suitable for the preparation of lightweight – thermal insulating mortars
- ✓ To be mixed with cement and water,
NO SAND REQUIRED
- ✓ Preadditivated at the factory =
Homogenous and consistant results



Lightweight thermal insulating mortar
Presentation created by Edilteco Group



Politerm: a successful transfer of theory to practical

- ✓ Perfect mixing with the water binder
- ✓ Homogeneous distribution within the mixture
- ✓ Light: just as low as from 200 kg/m³!
- ✓ High thermal insulation: $\lambda = 0,067$ W/Mk
- ✓ Perfect pumping capacities
- ✓ Prevention of the polystyrene beads from floating.



TECHNICAL
DATA SHEET

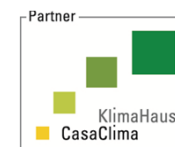


MANUAL
OF USE

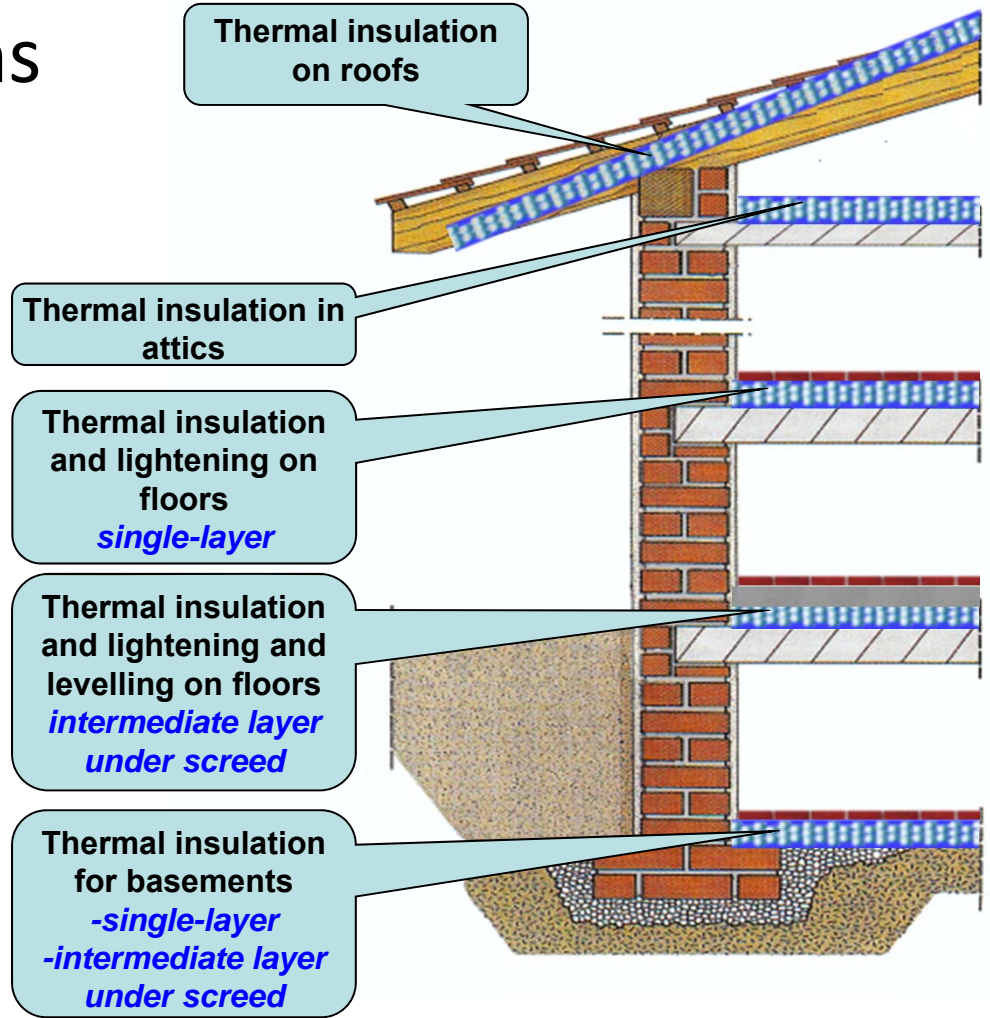


VIDEO PRESENTATION

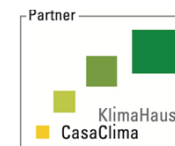
Lightweight thermal insulating mortar
Presentation created by Edilteco Group



Politerm applications



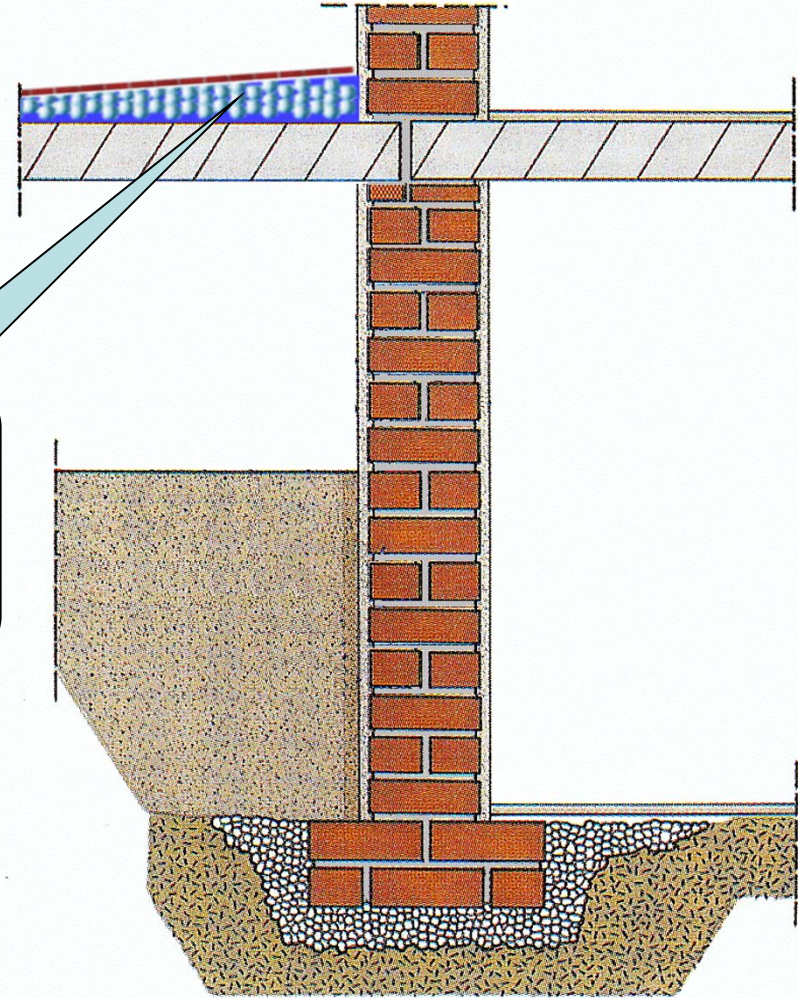
Lightweight thermal insulating mortar
Presentation created by Edilteco Group



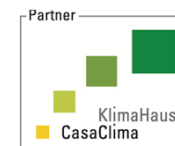
Politerm applications



Thermal insulation, lightening and gradient formation on terraces
single-layer



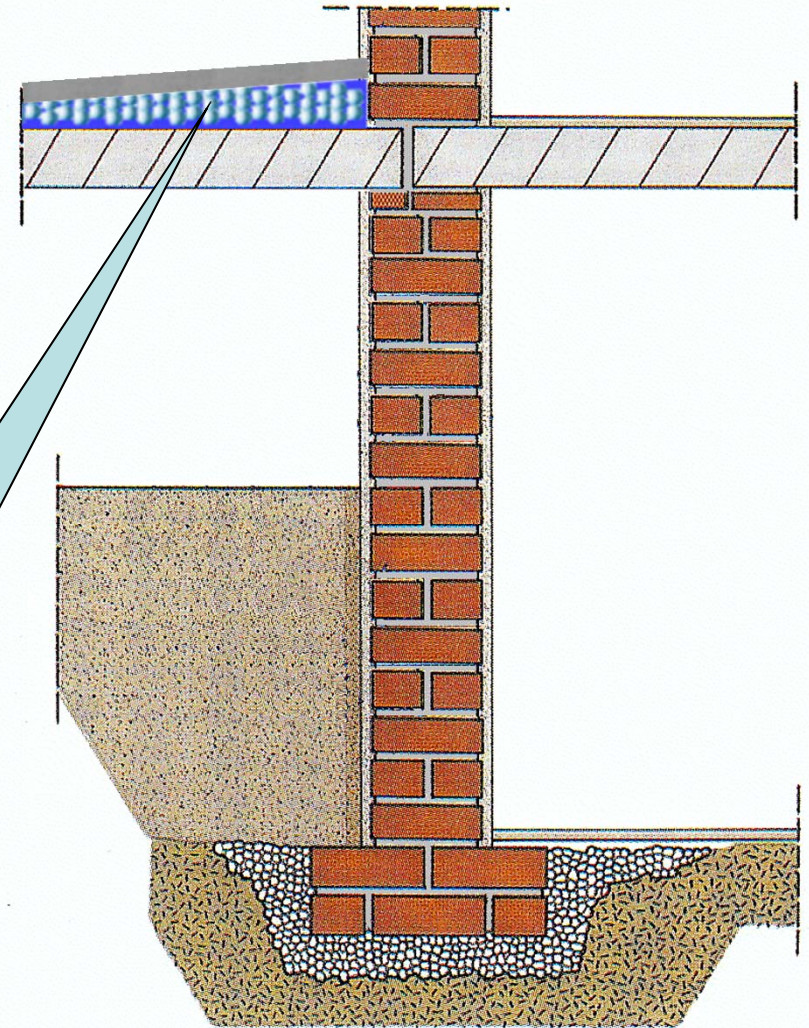
Lightweight thermal insulating mortar
Presentation created by Edilteco Group



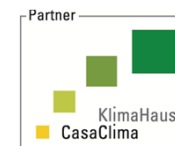
Politerm applications



Thermal insulation, lightning and gradient formation on terraces
Intermediate layer under screed



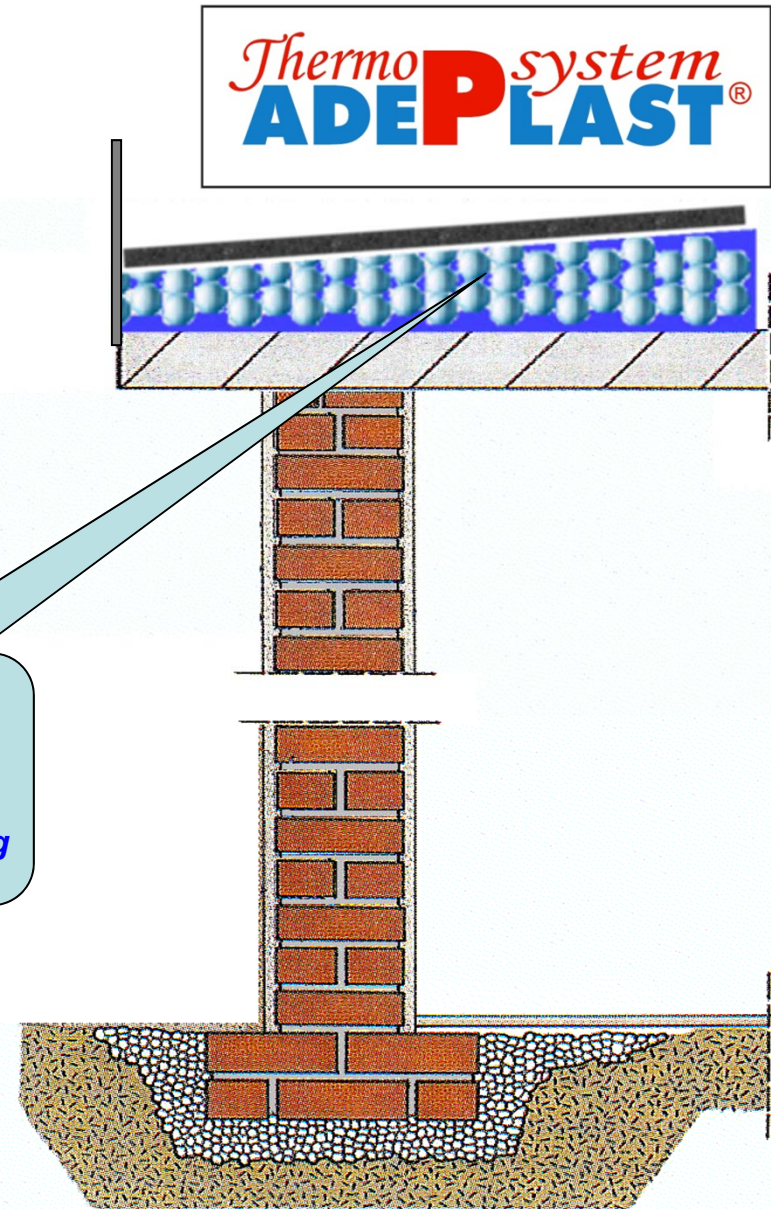
Lightweight thermal insulating mortar
Presentation created by Edilteco Group



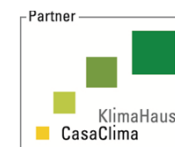
Politerm applications



Thermal insulation,
lightening and
gradient formation
on flat roofs
under waterproofing layer



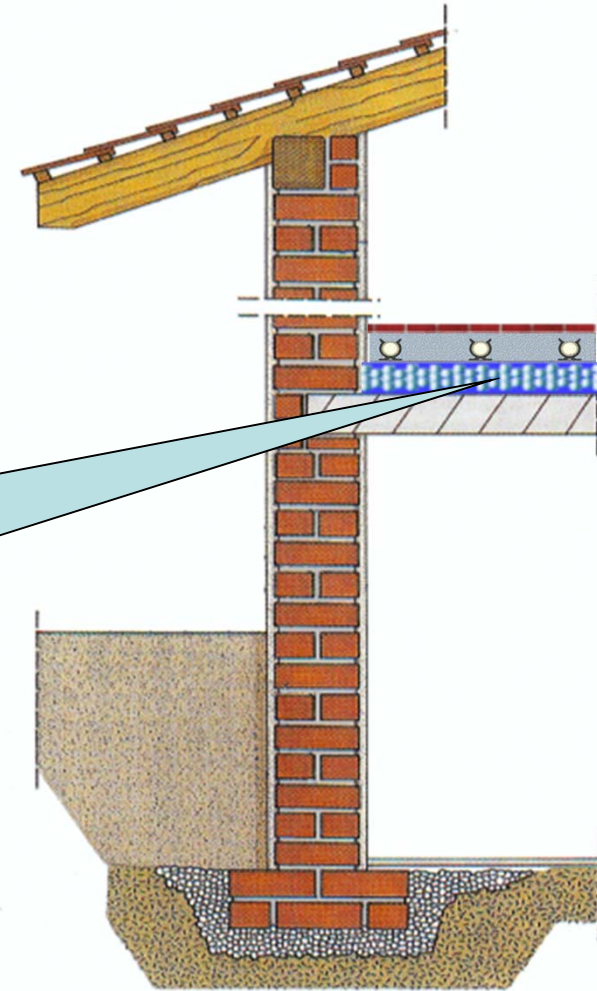
Lightweight thermal insulating mortar
Presentation created by Edilteco Group



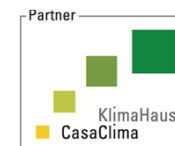
Politerm applications



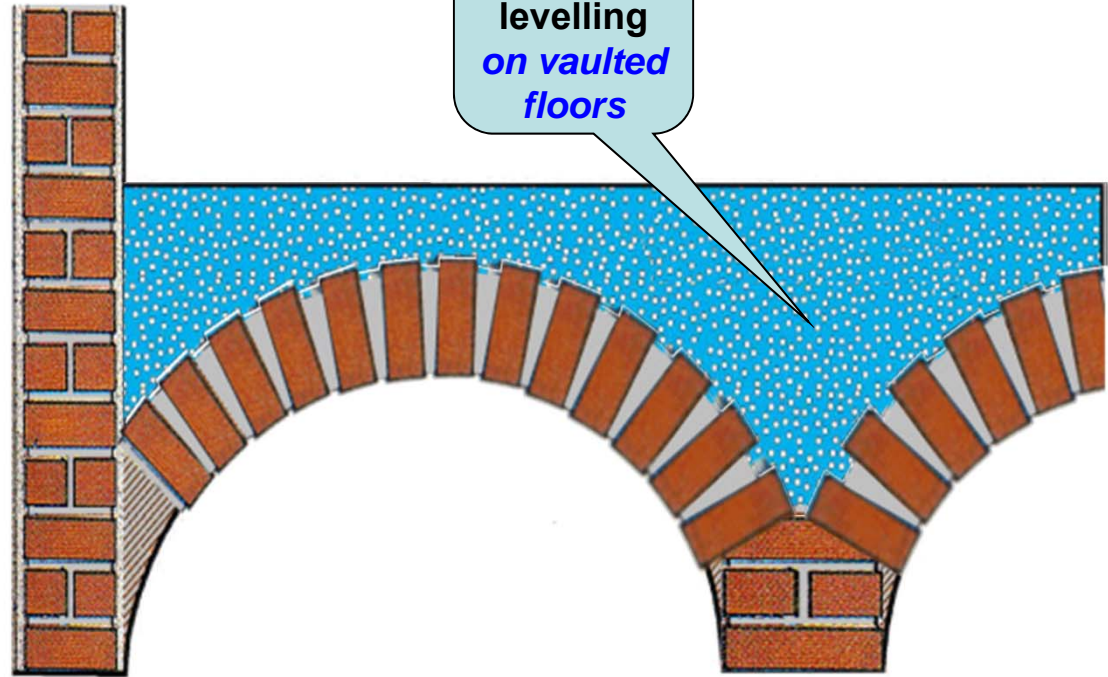
Thermal insulation,
lightening and
levelling
intermediate layer
under floor heating
system



Lightweight thermal insulating mortar
Presentation created by Edilteco Group

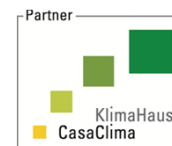


Politerm applications



Thermal
insulation,
lightening
and
levelling
*on vaulted
floors*

Lightweight thermal insulating mortar
Presentation created by Edilteco Group



Politerm applications: bricks production



- ✓ A mixture of Politerm + Cement + Sand + Water is suitable for the preparation of lightweight –thermal insulating bricks
- ✓ Different bricks shapes
- ✓ A convenient trade-off between insulation and lightness can be reached by adjusting the dosage of the single components
- ✓ Bricks can be used mainly for partitional and internal wall (in-between structural pillars)
- ✓ The use of the bricks for structural purpose should be verified locally and comply to the national regulation

Politerm: preparation

POLITERM
THE LIGHTWEIGHT THERMAL INSULATING MORTAR
NO SAND IN THE MIXTURE



POLITERM



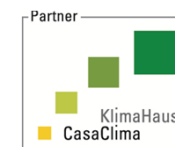
CEMENT



CLEAN
WATER



Lightweight thermal insulating mortar
Presentation created by Edilteco Group



Politerm: preparation

Cement mixer (*)



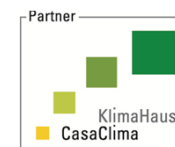
(*): 200 litres packaging
recommended

Truck mixer (**)



()**: 500 litres packaging
recommended

Lightweight thermal insulating mortar
Presentation created by Edilteco Group



Politerm equipment



HIGH PRODUCTIVITY !

POLITERM MACHINE

- Suitable for mixing and pumping of lightweight mortars
- Capacity: 10-12 m³ /h of mortar
- Tank: 1000 lt
- Pumping distance: 120 m horizontally and >30 m vertically
- Electrical power 7,5 kW – 380 V
- Weight: 800 kg

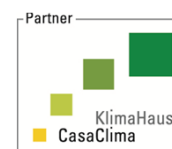
Other versions:

- With automatic dosage of water
- Diesel engine



TECHNICAL
DATA SHEET

Lightweight thermal insulating mortar
Presentation created by Edilteco Group



Politerm equipment



VERSATILE AND PORTABLE !

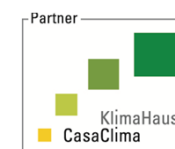
ISOLCAP MACHINE

- Suitable for lightweight mortars and selflevelling mortars
- Capacity: 3 m³ /hour of mortar
- Tank: 260 lt
- Pumping distance: 50 m horizontally and 25 m vertically
- Electrical power 6 kW – 380 V
- Weight: 128 kg



TECHNICAL
DATA SHEET

Lightweight thermal insulating mortar
Presentation created by Edilteco Group



Politerm equipment



POWERFUL AND RELIABLE !

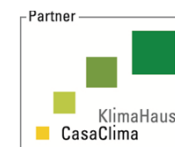
POLITERM PUMP

- Suitable for pumping of premix lightweight mortars
- Capacity: 500 litre/minute
- Tank: 200 lt
- Pumping distance: 120 m horizontally and 60 m vertically
- Electrical power: 7,5 kW – 380-220 V
- Weight: 300-350 kg



TECHNICAL
DATA SHEET

Lightweight thermal insulating mortar
Presentation created by Edilteco Group



Politerm equipment



PRACTICAL AND QUICK !

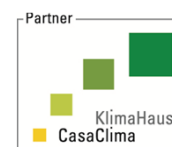
POLITERM BLOW READY MIX

- Suitable for blowing of Politerm into the truck mixer
- Capacity: 750 litre/minute
- Tank: 760 lt
- Pumping at 4 m high
- Electrical power: 0,75 kW – 380 V
- Weight: 300 kg



TECHNICAL
DATA SHEET

Lightweight thermal insulating mortar
Presentation created by Edilteco Group



Politerm based Readymix products

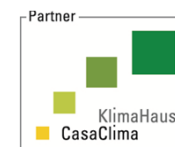
VERTICAL WALLS
AND CEILING



HORIZONTAL INSULATION
AND LIGHTENING



Lightweight thermal insulating mortar
Presentation created by Edilteco Group



POLITERM: SUMMARY OF MAIN ADVANTAGES

- Using a higher performance material means obtaining savings in terms of:
 - ✓ Material consumption
 - ✓ Weight
 - ✓ Space (reduced thickness)
 - ✓ Time

- Furthermore, due to its lightness, it contributes to considerably reduce the earthquake effect at the buildings

TO CONCLUDE:

- **MARKET:** Energy saving & Fuel Poverty are issues which are forcing individuals and corporate bodies to conserve what little global energy there is left. Hence the *adoption of thermal insulating systems are necessary.*
- **PRODUCT:** *Politerm* is the product which combines the *best thermal insulating properties with the lightness of the material and a speed of application unequalled with ANY other product.*
- **APPLICATIONS:** for any need, in all areas of the buildings, Politerm and the premix products *solve the issue of the thermal insulation in the most efficient and effective way*



**We warmly
Thank You
for your attention**

Grazie